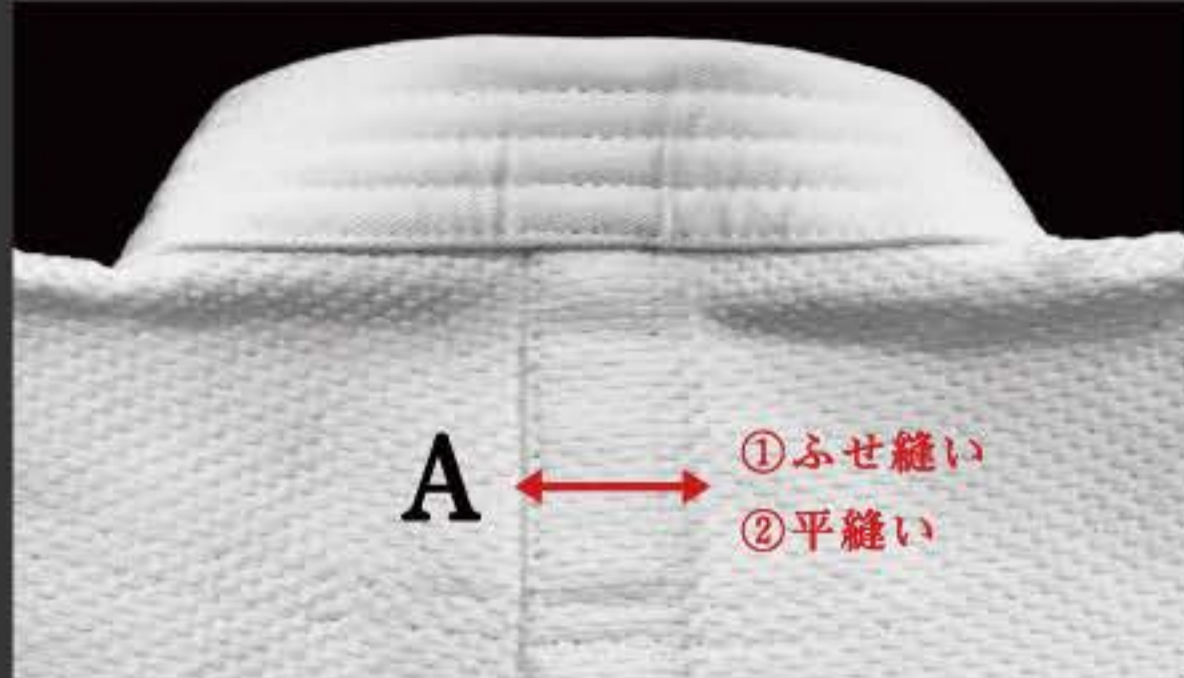


YAWARA.JAPAN technology



A

- ①By making the sewing unique to YAWARA Japan, the back seam is widened and the feeling of incongruity is eliminated and the movement of the Judo uniform can be performed more smoothly.
- ②The 3D cut fits the player's body, creating a sense of unity with Judo clothing that has never existed and enabling quick response.

B

- ①Cutting style that maximizes the range of motion of the arm and reduces the burden on the arm by making the sleeve stitch on the back side
- ②Polished functional beauty (soft Japan original sewing) and innovative (cutting) performance (knitting) support at a high level.

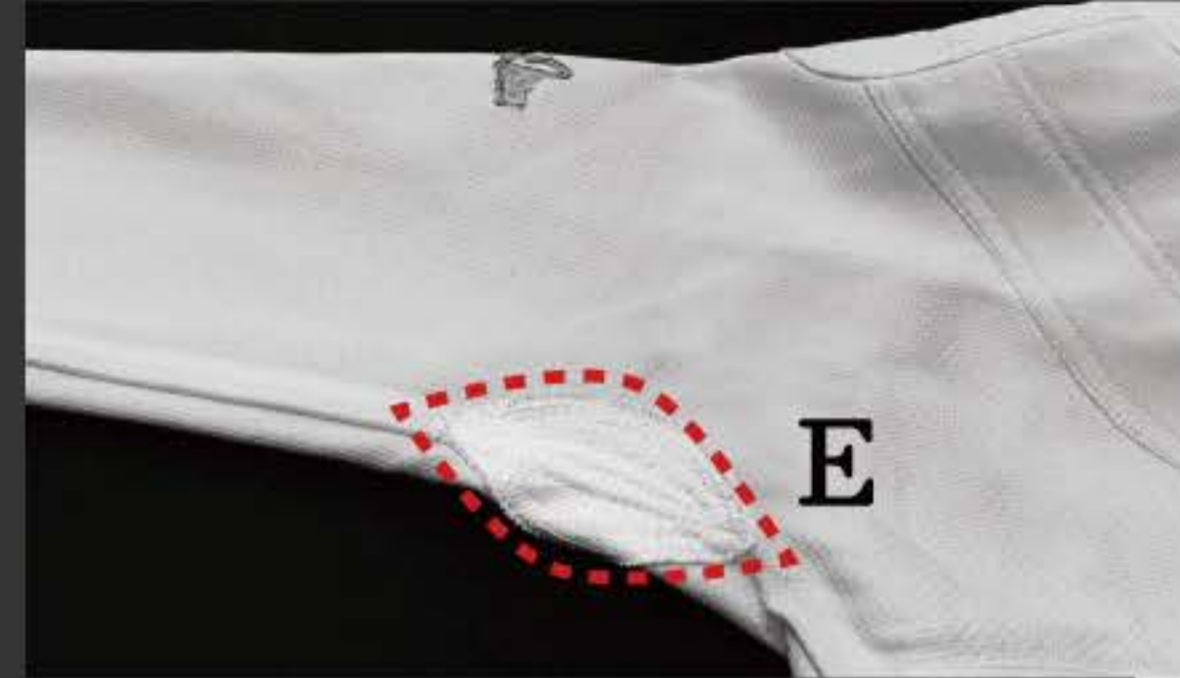


C

- ①Unique cutting reduces shoulder strain
- ②In addition, the range of motion of the shoulder is greatly improved

D

- ①By folding the hem, the joint with the collar is significantly stronger.
- ②By folding the hem, you can wear it beautifully and beautifully.



E

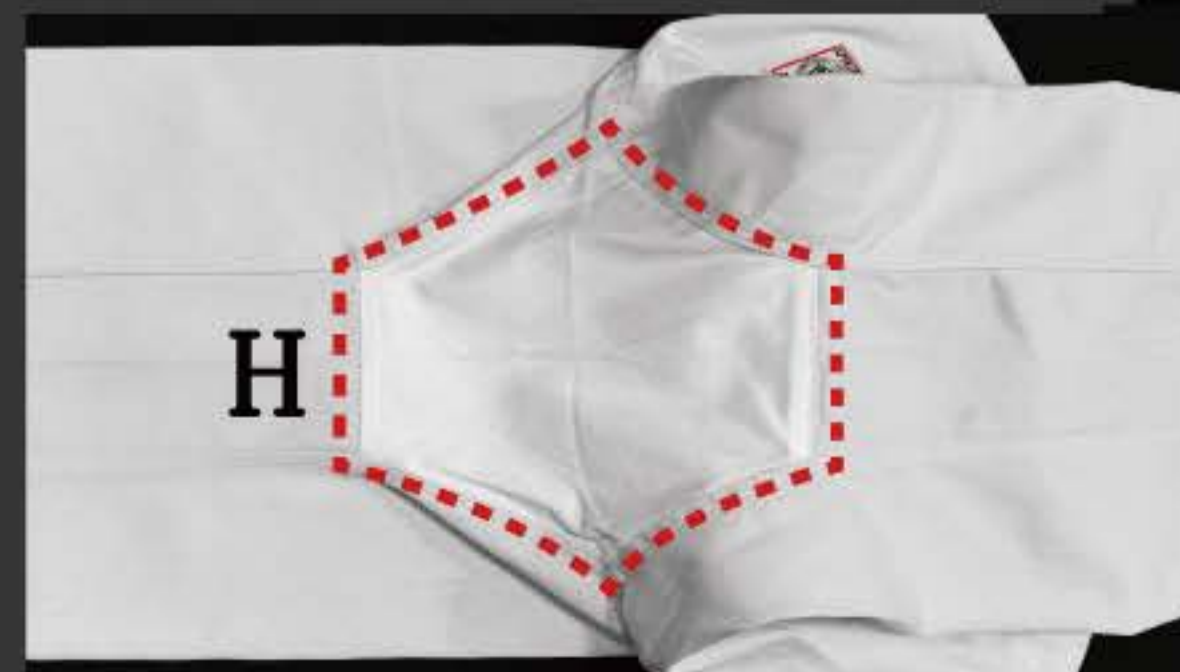
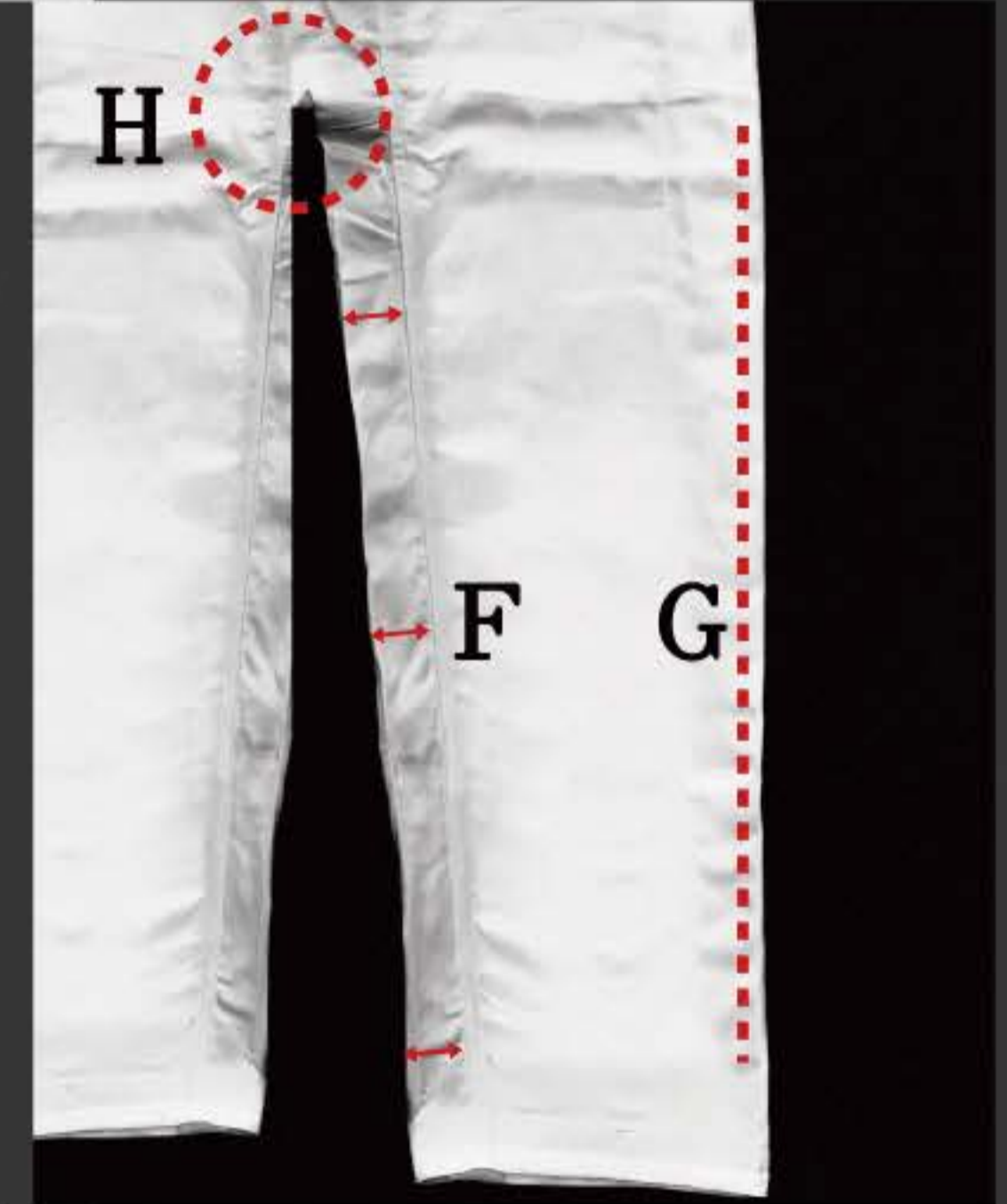
- ①Reinforcement mounting method that supports smooth movement of the arm

F

- ①A style that can accommodate speedy movements
- ②The range of motion of the foot can be up to 180 °
- ③You can enjoy a refreshing fit by eliminating the discomfort of the crotch

G

- ①A feeling of fit can be achieved by eliminating the conventional outer stitch and using a single piece of fabric.
- ②Experience the speedy footing and quick movement by sewing with one piece of fabric



H

- ①Style that eliminates the feeling of dub on the crotch

I.
Sewing, the cutting that are special so that a foot technique can change smoothly

J.
Sewing, the cutting that 仍 was easy to come, and pursued ease of wearing